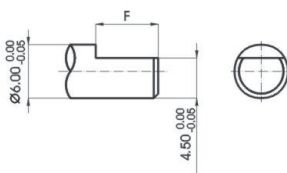
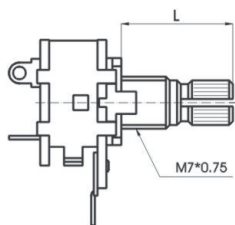


Style
型式

Specification
規格

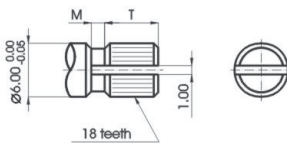
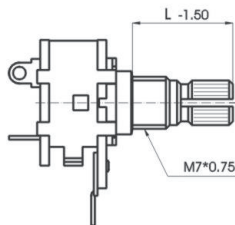
R1610S-
R1620S-
R1612S-

METAL SHAFT



F TYPE:

X	A	G	B	C	D		
L	15	18	20	25	30		
F	7	10	12	12	12		

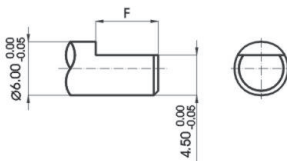
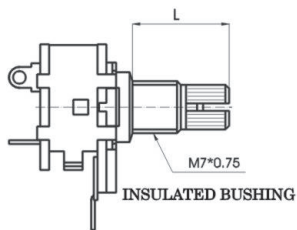


KQ TYPE:

X	0	1	2	3	4	5	6		
L	10	12	15	20	25	30	35		
T	2.3	3.5	6	9.9	12.1	12	12		
M	0.3	0.5	1	1.5	2	2	2		

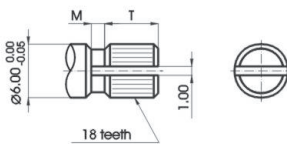
R1611S-

METAL SHAFT



F TYPE:

X	A	B	C				
L	15	20	25				
F	7	12	12				

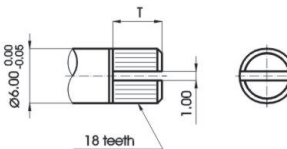
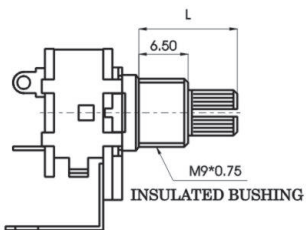


KQ TYPE:

X	9	2	3	4	5		
L	13	15	20	25	30		
T	5.8	6	9.9	12.1	12		
M	0	1	1.5	2	2		

R1615S-

INSULATED SHAFT



KQ TYPE:

X	X						
L	13						
T	6.0						

Mechanical characteristics: 機械的性能

Total rotational angle 全迴轉角度	$300^{\circ} \pm 5^{\circ}$
Rotational torque 迴轉扭力	2~20mN.m (20~200gf.cm)
Rotation stopper strength 止迴轉強度	0.7N.m (7kgf.cm)
Push pull strength 軸推拉強度	80N (8kgf)
Bushing nut tightening strength 軸套螺紋緊密強度	0.7 N.m (7kgf.cm)

Electrical characteristics: 電氣的性能

Total resistance 總阻值	5K Ω ~2M Ω
Total resistance tolerance 總阻值容許差	$\pm 20\%$ (more than 1M Ω $\pm 30\%$)
Rated power 定格電力	curve B:0.125W other than B:0.06W
Max. operating voltage 最高使用電壓	curve B:200V other than B:150V
Resistance taper 阻值線性	A,B
Residual resistance 殘留阻值	$R \geq 250K\Omega$ 0.1% max. of total resistance $250K\Omega > R > 10K\Omega$ 20 Ω max. $10K\Omega \geq R$ 10 Ω max.
Insulation resistance 絕緣抵抗	more than 100M Ω at DC 500V
Withstand voltage 耐電壓	for 1 minute or more at DC 500V

Durability: 耐久的性能

Rotational life 迴轉壽命	10,000 cycles
-------------------------	---------------